

EPCOT INTERNATIONAL FESTIVAL OF THE HOLIDAYS

PLAN YOUR DAY WITH THE FESTIVAL PASSPORT

You'll find Holiday Kitchen menus, information about holiday storytellers and entertainment, holiday shopping destinations and the Candlelight Processional.

HOLIDAY KITCHENS

Savor bite-size seasonal flavors at limited-time outdoor food & beverage locations.

HOLIDAY ENTERTAINMENT & STORYTELLERS

Festive performers bring time-honored traditions to life through storytelling and musical acts.

SHOPPING

There's something for everyone on your list! At Epcot, you can find Festival merchandise, holiday gifts and authentic souvenirs from around the world.

FUN FOR KIDS OF ALL AGES!

Celebrate and create holiday traditions with your whole family.

NEW! FAMILY PLAY ZONE

Let your little ones burn off their excess energy at a fun playground in Future World West designed with them in mind.

NEW! HOLIDAY COOKIE STROLL

Track your purchase of five select holiday cookies in your Festival Passport and receive a special complimentary completer cookie.

FESTIVE PHOTOS AND CHARACTER GREETINGS

Capture memories in festive photos with holiday decorations and enjoy Disney Character Greetings.

CANDLELIGHT PROCESSIONAL

A celebrity narrator shares the Christmas story with a 50-piece orchestra and glorious massed choir. Guarantee your seat with a Candlelight Dining Package, which pairs a fine dining experience with a reserved seat for the show. Call 407-WDW-DINE to book. Limited standby seating is available.

FINAL HOLIDAY SEASON!

ILLUMINATIONS: REFLECTIONS OF EARTH

Find your perfect spot around World Showcase Lagoon to enjoy fireworks, enhanced with an extra-festive holiday finale.

PRESENTING SPONSOR
AdventHealth

CORPORATE SPONSOR
Twinings of London®

FESTIVAL PARTICIPANTS

AMERICAN HERITAGE® Chocolate
fairlife® ultra-filtered milk
JUST, Inc.

Melissa's Produce
T.G. Lee
Wondermade

UPCOMING FESTIVAL

Epcot® International Festival of the Arts
Featuring the *Disney on Broadway* concert series, world-class cuisine and remarkable visual art.
January 18-February 25, 2019



Enjoy unlimited digital downloads of all your Disney PhotoPass® vacation photos for one price with Memory Maker!

- One day of photos with **Memory Maker One Day**
- All of your vacation photos with **Memory Maker**

Visit the My Disney Experience mobile app* to preview and purchase your photos.

Memory Maker includes photos taken during the applicable Memory Maker window and linked to the Memory Maker guest's Disney account. A MagicBand is required to receive certain admission photos and other digital content. Photos and other digital content will expire pursuant to the expiration policy at <http://www.disney.com/photopass>. Help and support: <http://www.disney.com/photopass>. *Valid theme park admission required for certain photo locations. Memory Maker is subject to Memory Maker terms at <http://www.disney.com/photopass>. Disney is not responsible for missing, lost or damaged photos. Subject to change without notice. ©Disney 11/18/18

My Disney Experience

- Reserve and modify Disney FastPass+™ selections.
- Buy Walt Disney World Theme Park tickets.*
- Get step-by-step directions.
- NEW! Order and pay for meals in advance with mobile ordering.**

The official mobile app that's the one stop shop for your Walt Disney World, vacation!

Download it for FREE today.*

*App includes products for purchase.



*Availability subject to device limitations and features may vary by device or service provider. Message and data rates may apply. Coverage and app stores not available everywhere. *From under 18, get your parent's permission first. **Valid Theme Park admission and online registration required. Disney locations, attractions and entertainment experiences, the number of selections you can make and available meal options are limited. **App order purchases are available to residents of all countries. **Mobile ordering available at select food-service locations only. ©Disney 11/18/18

Disney Vacation Club
STAY MAGICAL
year after year

Look for this icon on the map to visit our kiosks for more information!

PAYMENT OPTIONS



WALT DISNEY WORLD® RESORT ACCEPTS

Disney® Visa® Cards, Disney Rewards Redemption Card, Disney Gift Card, Visa®, MasterCard®, Discover®, American Express®, Diners Club®, JCB®, traveler's checks, cash and Disney Dollars.

English GUIDEMAP

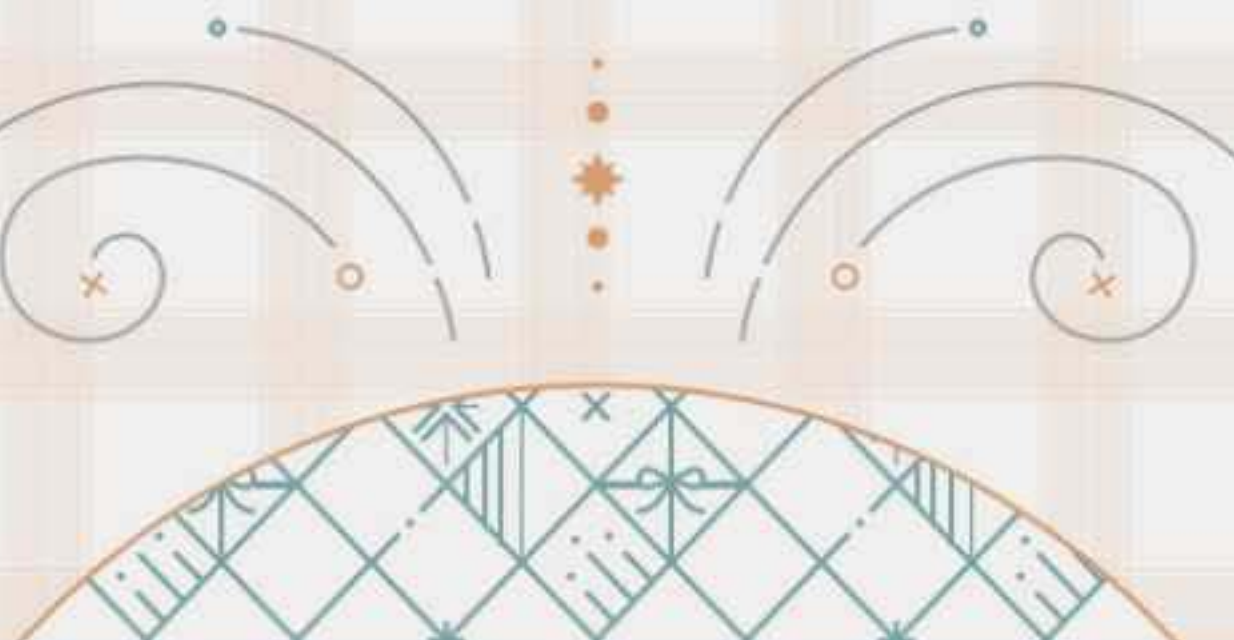


EPCOT INTERNATIONAL FESTIVAL OF THE HOLIDAYS OF THE HOLIDAYS 2018

Presented by AdventHealth

November 18 - December 30

#EpcotHolidays



Download My Disney Experience from an app store to access real-time Park information and step-by-step walking directions. Or visit MyDisneyExperience.com on your mobile browser.

IGNITE YOUR IMAGINATION

NIGHTTIME SPECTACULAR



Illuminations: Reflections of Earth FP+ The World Showcase Promenade comes alive with the brilliance and splendor of music, lights, lasers and pyrotechnics

featuring a holiday finale! Now, more than ever it's time to give this classic show a fond farewell. See Times Guide.

FUN FOR KIDS OF ALL AGES



The Seas with Nemo & Friends® Join Nemo for a ride through the Big Blue World on *The Seas with Nemo & Friends* Attraction! Have a conversation with Crush and

Dory at Turtle Talk with Crush. Visit a multilevel undersea observatory to view stingrays, sharks and more!



Shows and Character Greetings Discover authentic entertainment experiences from around the globe in World Showcase. Meet many of your favorite Disney

Characters throughout Epcot! See Times Guide.

Disney & Pixar Short Film Festival FP+ Experience popular Disney and Pixar short films at this 4-D cinema attraction.

TIPS & INFORMATION

GUEST RELATIONS

Please visit Guest Relations located east of *Spaceship Earth*® for:

- Questions and Concerns
- Ticket Upgrades
- Separated Guest Assistance
- Lost and Found
- Services for Guests with Disabilities



Services for International Guests are available at Guest Relations.

Los Servicios para Huéspedes Internacionales están disponibles en la oficina de Guest Relations.

Des services pour les Visiteurs Internationaux sont disponibles au Guest Relations.

Serviços para Hóspedes Internacionais estão disponíveis no Guest Relations.

Dienste für Internationale Gäste sind bei der Guest Relations erhältlich.

ゲストリレーションにて世界各国からのゲストの皆様向けのサービスをご案内しております。

ENHANCE YOUR DAY



Special Events & Tours Call 407-WDW-DINE (939-3463) or visit Guest Relations for more information and availability for seasonal events and guided tours.

Mobile Ordering Save time by ordering from the *My Disney Experience* app at locations noted with

EXPLORE EPCOT



Mouse Gear Festival merchandise and one-stop shopping destination for Disney Character apparel, toys, Park souvenirs and jewelry.

Coral Reef Restaurant Dine on seafood specialties and more with underwater views of a living coral reef!

Worldly Galleries Visit galleries in Mexico, Norway, China, The American Adventure, Morocco and Japan.

Disney Phineas and Ferb: Agent P's World Showcase Adventure Become a super secret agent in this interactive adventure through one of several World Showcase Pavilions! Visit agentpwsa.com, the Recruitment Center in Showcase Plaza or download the Play Disney Parks mobile app to start your adventure.

PARK RULES

To provide a comfortable, safe and enjoyable experience for our Guests, please comply with Park rules, signs and instructions including:

- All bags are subject to inspection prior to admission.
- Proper attire is required.
- To purchase an alcoholic beverage, Guests must present a valid form of identification.
- Smoking is allowed only in designated areas.
- Weapons are strictly prohibited.
- Guests may be asked to leave if deemed appropriate.

Additional details and a complete listing of Park rules are available at Guest Relations or disneyworld.com/parkrules.

Theater venues have limited capacity and may fill up before show time. Please ensure your entire party is together prior to entering the facility. Offerings subject to change.

Ticketing Windows

Visit for ticket upgrades and annual pass information. Located at the Main Park and International Gateway Entrances.

DISNEY WILD ABOUT SAFETY®

TIPS As Timon and Pumbaa would say, "Watch over your herd." Visit disneywildaboutsafety.com for more safety tips and fun games.

TURN WAIT TIME INTO PLAY TIME

Interact with the Parks in a whole new way with Play Disney Parks, a mobile app that connects family & friends to the Parks like never before! Visit disneyworld.com/Play to download—and start having fun today!

TIMES GUIDE

Pick up a Times Guide for today's entertainment operating hours, character appearance information and more!

LEAVING THE PARK? All Guests who wish to leave the Park and return later in the day may do so by presenting their original admission media.

- To get to the **Epcot parking lot**, take a Parking Tram located outside the front of the Park.
- To get to **Magic Kingdom® Park**, take a Monorail to the Transportation and Ticket Center and then a Monorail or Ferryboat to the Park.
- To get to **Disney's Animal Kingdom® Theme Park**, take a Bus located outside the front of the Park.
- To get to **Disney's Hollywood Studios®**, walk or take a FriendShip Boat from International Gateway, or take a Bus located outside the front of the Park.
- To get to **Disney Springs®** between the hours of 4:00pm–11:00pm, take a Bus located outside the front of the Park. At all other times, take a Bus to any *Disney Resort* hotel, and then another Bus to *Disney Springs*.
- To get to **Disney's Yacht & Beach Club Resorts, Disney's BoardWalk Inn and Villas** or the **Walt Disney World Swan and Dolphin Hotels**, walk or take a FriendShip Boat from International Gateway.
- To get to all other **Disney Resort hotels**, take a Bus located outside the front of the Park.

Ask us about staying at a *Disney Resort* hotel tonight. Call 407-WDISNEY (934-7639).

Please look for the recycling containers throughout the Park and join us in our commitment to the environment.

Please do not feed the birds or other animals, and do not throw objects (including coins) into the water.





FP+ RESERVE ACCESS TO SOME OF YOUR MUST-DO FUN!
Select up to three FastPass+ experiences by visiting a FastPass+ kiosk identified on the map with FP+. Once you redeem your initial selections, return for information about availability and selecting additional experiences.

Complimentary Wi-Fi
Wi-Fi is available in most areas. Some attractions and shows may have limited availability.

FUTURE WORLD EAST

- 1 Spaceship Earth® FP+ HC AED**
Explore the history of innovations from the Stone Age to the Digital Age.
- 2 JAMMitors Jammin' percussion.**
- 3 Mission: SPACE® FP+ CC AED** Experience NASA-style training with a simulated space launch. *Expectant mothers should not ride.*
• **Green Mission** for a less intense experience \uparrow 40"/102 cm
• **Orange Mission** for an intense journey \uparrow 44"/112 cm. Visit the interactive play area, Advanced Training Lab, at the exit.
- 4 Test Track® Presented by Chevrolet® FP+ B A**
 \uparrow 40"/102 cm. \uparrow 44"/112 cm. Create your own virtual concept vehicle and put it through the paces on the exhilarating hills, hairpin turns and straightaways of the *Test Track* circuit.
- 5 Innovations®** Visit this vibrant pavilion featuring fun activities and exhibits including *COLORTOPIA™ Presented by Glidden®* and *The SpectacuLAB Presented by Murata.*
- 6 Electric Umbrella Hosted by Coca-Cola® LD S**
Burgers, chicken breast nuggets, flatbreads, seasonal salad and vegetarian options.
- 7 Joffrey's Coffee & Tea Company®**
- 8 Mouse Gear** Find the perfect holiday gifts, including Festival merchandise, Disney Character apparel, toys and Park souvenirs, *PANDORA™ Jewelry* and *Dooney & Bourke* handbags.

FUTURE WORLD WEST

- 9 Epcot Character Spot** The perfect place to meet favorite pals and new friends.
- 9a Baymax** Your personal health care companion from "Big Hero 6!"
- 9b Joy and Sadness** Adventurous emotions from Disney•Pixar's "Inside Out."
- 9c Mickey, Minnie and Goofy FP+ A** All in one fun spot.
- 10 The Seas with Nemo & Friends®**
 - 10a The Seas with Nemo & Friends Attraction FP+ HC AED** Board a "clamobile" to relive some of your favorite scenes from Disney•Pixar's "Finding Nemo."
 - 10b Turtle Talk With Crush FP+ A** (Available Fridays) An engaging conversation with Crush, Dory and some of their marine animal friends.
 - 10c SeaBase** Surround yourself with thousands of beautiful live fish, sharks, sea turtles and more as you explore this 5.7 million gallon aquarium!
- 11 The Land**
 - 11a Soarin'® Around the World FP+ HC AED** Soar high in the sky and feel the wind race across your face during a hang-gliding flight across the globe.
 - 11b Living with the Land Presented by Chiquita® FP+ HC AED** Travel through the greenhouses of The Land with the entire family to see the tasty side of science, featuring innovative food-growing techniques.
- 11c Sunshine Seasons BLD S**
Greenhouse-inspired, fresh, fast-casual fare.
- 11d Chip 'n' Dale's Harvest Feast at Garden Grill Restaurant BLD \$\$\$** Family-style Disney Character dining with Chip 'n' Dale and friends. American cuisine.

- 12 Imagination!**
 - 12a Journey Into Imagination With Figment FP+ HC AED** Tour the Imagination Institute with Figment, then let the little ones' imaginations run wild at ImageWorks.
 - 12b Disney & Pixar Short Film Festival FP+ HC AED** Experience popular animated shorts in this 4-D cinema attraction for fans of all ages.
- 13 Fountain View S S** Starbucks® Espresso, Artisan breakfast sandwiches and house-made Disney pastries.
- 14 Coral Reef Restaurant LD SS** Dine on seafood specialties and more with underwater views of a living coral reef.
- 15 Art of Disney**
Collectibles, including original Disney artwork, sculptures and prints.
- 16 Club Cool Hosted by Coca-Cola®** Exclusive Coca-Cola® merchandise and complimentary samples of soft drinks from around the world.

SHOWCASE PLAZA

- 17 Refreshment Port**
- 18 Joffrey's Coffee & Tea Company®**
- 19 Port of Entry** Home décor and seasonal items.
- 20 Disney Traders** Disney family apparel and décor.

WORLD SHOWCASE

- 21 MEXICO**
Gran Fiesta Tour Starring The Three Caballeros HC AED Discover the sights of Mexico and the antics of three feathered amigos on this boat ride.
- 22 NORWAY**
Meet Anna and Elsa at Royal Sommerhus Meet Anna and Elsa, the beloved sisters of Arendelle.
Frozen Ever After FP+ HC AED Board a wooden Viking ship and sail through the fantastical world of "Frozen."
- 23 CHINA**
Reflections of China HC AED View the places and faces of the world's most populous country in this Circle-Vision 360 film. *14 minutes.*
Jeweled Dragon Acrobats Amazing Chinese acrobats.
- 24 OUTPOST**
Refreshment Outpost
- 25 GERMANY**
Germany Dining S-SSS
Table Service: Biergarten Restaurant
Quick Service: Sommerfest
- 26 ITALY**
Karamell-Küche Featuring Werther's® Original Caramel Freshly-made caramel corn, caramel covered apples and strawberries.
Glas Und Porzellan German ornaments, steins and Werther's® Original Caramel.
- 27 JAPAN**
Japan Dining S-SS
Table Service: Teppan Edo, Tokyo Dining
Quick Service: Katsura Grill
- 28 THE AMERICAN ADVENTURE**
The American Adventure HC AED
Explore the past and future of America through film, music and *Audio-Animatronics®*. *30 minutes.*
The American Adventure Dining S
Quick Service: Liberty Inn Hosted by Coca-Cola®
- 29 JAPAN**
Japan Dining S-SS
Table Service: Teppan Edo, Tokyo Dining
Quick Service: Katsura Grill
- 30 MOROCCO**
Morocco Dining S-SS
Table Service: Restaurant Marrakesh, Spice Road Table
Quick Service: Tangierine Café
- 31 FRANCE**
Impressions de France HC AED Experience the grandeur and charm of the French countryside through film. *20 minutes.*
France Dining S-SSSS
Table Service: Chefs de France, Monsieur Paul
Quick Service: Les Halles Boulangerie-Patisserie
- 32 INTERNATIONAL GATEWAY**
World Traveler
Family apparel, plush, headwear and Disney Trading Pins.
The Fjording "Frozen" merchandise, Helly Hansen and fragrances.
- 33 UNITED KINGDOM**
British Revolution British rock music.
United Kingdom Dining S-SS
Table Service: Rose & Crown Dining Room
Quick Service: Yorkshire County Fish Shop
Lounge: Rose & Crown Pub
- 34 Joffrey's Coffee & Tea Company®**
- 35 CANADA**
O Canada! HC AED Discover the True North of Canada in this inspirational Circle-Vision 360 film. *14 minutes.*
Canada Dining \$\$\$
Table Service: Le Cellier Steakhouse
Popcorn in Canada
Maple popcorn, soft drinks and Canadian draft beers.
Northwest Mercantile Hatley pajamas and Canadian maple syrup.

LEGEND

- Symbols on Map**
- Restrooms
 - Accessible Restrooms
 - Companion Restrooms
 - First Aid® Presented by Florida Hospital (soon to be AdventHealth)
 - Automated External Defibrillators
 - Guest Relations
 - Baby Care Center Hosted by Huggies®
 - Service Animal Relief Areas
 - Smoking Locations
 - ATMs Presented by Chase
 - Stroller Rentals Hosted by Huggies®
 - Wheelchair Rentals
 - Locker Rentals
 - Disney PhotoPass® Photographers
 - Memory Maker Sales Center
 - Nikon® Picture Spot
 - Assistive Listening
 - Water Transportation
- Symbols in List**
- FP+ FastPass+ experience
 - Single Rider Queue
 - Physical Considerations
 - The seating and restraints on this attraction may prohibit Guests of certain body shapes or sizes from riding.
 - Minimum Height Requirement
 - May remain in wheelchair/ECV
 - Must transfer from wheelchair/ECV
 - Must transfer to standard wheelchair
- Other Symbols:**
- Character Greetings
 - FastPass+ kiosks available in English, Spanish and Portuguese.
 - Fireworks Viewing for Guests with Disabilities
 - Kidcot Fun Stops Presented by Ziploc®
 - Disney Vacation Club® Information Center
 - *Emergency services available by calling 911.

- 36 NEW! Family Play Zone**
- 37 Taste Track**
- 38 JOYFUL! A Celebration of the Season**
- 39 Feast of the Three Kings**
- 40 Holiday Sweets & Treats**
- 41 Holiday Market**
- 42 Las Posadas Celebration**
- 43 Las Posadas Holiday Kitchen**
- 44 Holiday Market**
- 45 Sigrid Meets Julenissen the Christmas Gnome**
- 46 Chinese Lion Dancers**
- 47 Shanghai Holiday Kitchen**
- 48 Holiday Market** Through December 25, see Master Glassblower Reinhard Herzog.
- 49 Dorch & Dorch**
- 50 Bavaria Holiday Kitchen**
- 51 Holiday Market**
- 52 La Befana**
- 53 Tuscany Holiday Kitchen**
- 54 Candlelight Processional** November 22–December 30
- 55 Santa and Mrs. Claus** November 18–December 24
- 56 Voices of Liberty as Dickens Carolers**
- 57 Fife & Drum Tavern**
- 58 American Holiday Table**
- 59 Holiday Market**
- 60 Daruma Storyteller**
- 61 Shi Wasu Holiday Kitchen**
- 62 Holiday Market**
- 63 Sahara Beat**
- 64 Sapphire Holiday Kitchen**
- 65 NEW! Hanukkah Storyteller**
- 66 NEW! L'Chaim! Holiday Kitchen**
- 67 Père Noël**
- 68 Le Marché de Noël Holiday Kitchen**
- 69 Father Christmas**
- 70 Canadian Holiday Voyageurs**
- 71 Yukon Holiday Kitchen**

- FUTURE WORLD EAST**
- FUTURE WORLD WEST**
- SHOWCASE PLAZA**
- MEXICO**
- NORWAY**
- CHINA**
- OUTPOST**
- GERMANY**
- ITALY**
- THE AMERICAN ADVENTURE**
- JAPAN**
- MOROCCO**
- FRANCE**
- UNITED KINGDOM**
- CANADA**

Special Considerations for Attractions
Safety: Please abide by all safety warnings and notices.
Supervise children at all times. Children under age 7 years must be accompanied by a person age 14 years or older.
For your safety while on attractions, remain seated with hands, arms, feet and legs inside the vehicle. Supervise children.
All loose articles, such as mobile phones, hats/sunglasses, and water bottles, should be securely stowed while riding or left with a non-riding member of your party. Items lost while riding attractions may not be immediately retrievable. For your safety, do not attempt to retrieve lost articles in any area. Please see Cast Member for assistance.
Physical considerations on designated attractions:
Warning! For safety, you should be in good health and free from high blood pressure, heart, back or neck problems, motion sickness, or other conditions that could be aggravated by this adventure. Expectant mothers should not ride.

Dining
All dining locations listed accept a Disney dining plan unless otherwise noted.
Mobile Ordering
Reservations recommended. Call 407-WDW-DINE (939-3463).
B - Breakfast L - Lunch
D - Dinner S - Snack
\$ = \$14.99 and under per adult
\$\$ = \$15-\$34.99 per adult
\$\$\$ = \$35-\$59.99 per adult
\$\$\$\$ = over \$60 per adult
See disneydiningpricinginfo.com for pricing details.